



VASTU
2026 CATALOG



Environmental Energetics & Premier Research Labs

Just as we must look at the radiant potential of our life through the nutrition we consume, we must also examine the environmental energetics that surrounds our body at any given moment. The Science of Environmental energetics examines how the interaction between the earth's natural electromagnetic fields and human biofields influences our health, vitality, and overall well-being. The ancient practice of **Vastu**, originating from India, has long recognized this relationship. Through precise architectural design, Vastu aims to harmonize human-made structures with natural energetics, ensuring that the spaces we inhabit—homes, offices, and public spaces—enhance our biofield rather than deplete it.

In modern science, **bioenergetics** and **quantum biology** have provided a more detailed understanding of these principles. These fields explore how energy flows through biological systems and how environmental factors, such as **electromagnetic fields (EMFs)**,

geomagnetic influences, and quantum-level interactions, impact cellular biology and physiology.

This Catalog offers solutions that integrate ancient Vastu principles with contemporary findings from **quantum biology**, **bioenergetics**, and quantum physics to create a holistic offering to support both inner and external harmony with environmental energetics and beyond.

An Overview of Vastu and Bioenergetics – The Foundations of Environmental Energetics

Vastu, often compared to Feng Shui, is the science of aligning human structures with natural earth energetics. The earth is constantly pulsing with electromagnetic frequencies from its interaction with solar and geomagnetic forces. These energies influence human health, as humans are bioenergetic beings who rely on the earth's negative charge for grounding.

Core Principles of Vastu:

1. **Polarity and Grounding:** Humans function similarly to bioelectric batteries. Our bodies need the earth's negative charge to maintain a balanced biofield. However, contact with ungrounded materials—such as concrete and rebar—can lead to biofield depolarization, resulting in fatigue, health issues, and cognitive impairment. The human biofield is sensitive to fluctuations in geomagnetic fields and electromagnetic radiation, which can disturb the body's natural energetics if not properly mitigated.

2. **Sheng Chi and Sha Chi:** In Vastu, **Sheng Chi** refers to life-enhancing energy that flows naturally through a space, while **Sha Chi** refers to detrimental energy that can negatively impact health. Unchecked Sha Chi, often resulting from structural defects like sharp angles, rebar, or technological devices, can create biofield disturbance.

3. **Artificial Constructs:** Modern buildings, with their steel frames and synthetic materials, often trap or distort natural geomagnetic energy. These structures create artificial energy grids that negatively affect our biofields, resulting in chronic fatigue, poor immunity, and mental fog.

Bioenergetics: The Bridge Between Vital Energy and Cellular Health

Bioenergetics is the study of how energy flows through living systems, focusing on the molecular mechanisms by which cells convert nutrients into energy. At the cellular level, every biological process is influenced by electromagnetic fields, electric charges, and energy transfer processes.

1. **Cellular Energy Production: Mitochondria,** known as the powerhouses of the cell, produce energy in the form of **adenosine triphosphate (ATP)** through a process called oxidative phosphorylation. This process involves a delicate balance of redox reactions that are influenced by the surrounding **electromagnetic fields**.

2. EMF Influence on Mitochondria:

Studies suggest that chronic exposure to **electromagnetic radiation (EMFs)**, such as those emitted by cell phones and Wi-Fi devices, can disrupt mitochondrial function, reducing ATP production and impairing cellular metabolism. This disruption can lead to fatigue, brain fog, and even more severe conditions like neurodegenerative diseases.

3. **Quantum Tunneling:** Quantum biology explores phenomena like **quantum tunneling**, where electrons in biological systems travel through barriers they would not be able to cross under classical physics. This plays a key role in cellular processes such as photosynthesis and enzyme reactions. Disruptions to the **quantum coherence** of these processes—caused by environmental stressors such as EMFs—can lead to cellular inefficiency and disease.

Quantum Biology: The Quantum Mechanics of Life

Quantum Biology explores how quantum phenomena, such as wave-particle duality, quantum coherence, and entanglement, influence biological processes. The biofield, which is the subtle electromagnetic field around all living organisms, plays a key role in maintaining cellular coherence and function.

Key Quantum Biological Principles:

1. **Quantum Coherence in Biological Systems:** Biological systems maintain coherence by synchronizing the oscillations of subatomic particles. This coherence is critical for the proper functioning of cellular processes, particularly in the brain and nervous system. When environmental factors such as **EMFs** or **poor Vastu design** disrupt this coherence, it can lead to biofield imbalances, resulting in stress and disease.

2. **Zero-Point Energy and Bioenergetic Fields:**

Zero-point energy represents the highest efficiency state possible for any system.

Bioenergetic health depends on how well a person's biofield can harmonize with the fullest expression of their zero-point energy state. Disruptions in this interaction, whether from poor grounding or exposure to harmful electromagnetic fields, can cause bioenergetic imbalances, affecting health on a cellular level.

3. **Scalar Waves:** These non-Hertzian waves, described by **Nikola Tesla**, exist outside the traditional electromagnetic spectrum. Scalar waves are considered to enhance biofield coherence by aligning the body's energetic systems with natural resonance patterns. Our very own, **Quantum Pendant**, is designed using Vastu geometry, is one such tool used to strengthen the biofield by enhancing scalar wave interactions.

Environmental Disruptions: Electromagnetic Fields and Health

Technological advancements have introduced new forms of **bioenergetic stress**, particularly through **electromagnetic fields (EMFs)** emitted by wireless devices, electrical systems, and other modern technologies. These EMFs can interfere with the body's natural bioenergetic flow and disrupt cellular processes.

EMF Exposure and Its Effects:

1. **Cellular Disruption:** EMFs create bioenergetic stress by depolarizing cellular membranes, disturbing the flow of ions, and reducing mitochondrial efficiency. This leads to symptoms such as sleep disturbances, fatigue, brain fog, and even chronic conditions like depression and cardiovascular diseases.

2. **DNA Damage:** EMFs have been linked to increased oxidative stress and DNA damage, particularly in sensitive tissues like the brain and reproductive organs. DNA is particularly vulnerable to non-ionizing radiation, which

can create breaks in DNA strands, leading to mutations and cellular dysfunction.

3. **Quantum Interference:** On a quantum level, EMFs disrupt the coherence of biological systems by interfering with quantum tunneling and entanglement in cellular processes, making it difficult for cells to communicate and function efficiently.

Premier Remediation Tools for Bioenergetic Protection

To combat the harmful effects of EMF exposure and environmental energetic stress, we here at Premier Research Labs have developed **Vastu-based tools** and **bioenergetic grounding techniques**.

1. **Q-Disc 6.0:**

The **Q-Disc 6.0** is a powerful EMF mitigation tool that utilizes **quantum-state resonance** to protect against the harmful effects of wireless devices. By placing this thin disc on devices like cell phones, the Q-Disc shields the biofield from harmful frequencies while enhancing **beneficial bioenergetic flow**.

2. **LiquiTech Grounding:**

LiquiTech is an advanced grounding solution designed to eliminate bioenergetic disturbances from electrical systems. A small application of **LiquiTech paint** on cords, plugs, and electronic devices neutralizes harmful **Sha Chi** vectors, reducing bioenergetic stress and enhancing harmony in the environment.

3. **Quantum Pendant:**

The **Quantum Pendant**, based on **Vastu geometry** like the **Flower of Life**, is a wearable tool that strengthens and augments the biofield. Its layered design and use of **scalar wave technology** help protect the body from EMFs, while enhancing bioenergetic coherence.



Vastu-Based Remediation: Creating Energetically Harmonious Spaces

Vastu offers several strategies for creating spaces that harmonize with natural bioenergetic flows:

1. Circuit Box Reset:

One of the most important Vastu remedies, the **Circuit Box Reset**, neutralizes the harmful bioenergetic signatures emitted by a home's electrical system. This reset calms **Sha Chi vectors** and recalibrates the home's overall bioenergetic environment.

2. Geo-Ground Soil Remediation:

The soil around a home plays a crucial role in grounding and balancing its energetics. By applying **Geo-Ground**, a special blend of humic acid, ocean kelp, and mycorrhizae, the soil becomes more conductive,

allowing for proper bioenergetic flow. This technique grounds the house, preventing the buildup of harmful static charges and enhancing the flow of beneficial energy.

3. Front Door Reset:

The **front door**, known as the "Mouth of Chi," sets the dominant frequency for the entire home. By applying **Geo-Dots** around the door frame, particularly on glass cut-outs and the upper frame, the energetics of the space can be significantly enhanced.

Quantum Physics and Cellular Bioenergetics

Quantum physics provides the underlying framework for understanding how environmental energetics affect health on a cellular level. At the quantum scale, energy fields and matter are inseparable, with biological processes being governed by **wave-particle duality** and **quantum coherence**.

1. **Quantum Coherence in Cells:** Quantum coherence ensures that biological processes

like electron transport in mitochondria occur efficiently. Environmental disruptions such as EMFs break this coherence, leading to impaired cellular communication and reduced energy production.

2. **Zero-Point Energy and Health:** When living organisms achieve the **zero-point field**, a vast energy reservoir is made attainable. Grounding techniques, such as walking barefoot or using **Geo-Ground** to support soil remediation potential, enhance the potential for forming this connection.

3. **Scalar Waves and Healing:** Scalar waves, which exist beyond the electromagnetic spectrum, have been shown to promote healing by enhancing bioenergetic coherence. Devices like the **Quantum Pendant** harness scalar waves to align the body's energy field with natural resonances.



Geo-Bracelet

A Geometric Masterpiece Bracelet

This elite bracelet is made from top quality, solid 316L stainless steel (the best stainless in the jewelry market). It is hypoallergenic and has some nice weight to it. Interestingly, each link in this bracelet acts like a little mobius strip that feeds bioenergy forward into the link next to it – as if its “dancing” forward throughout the entire chain of the bracelet. Wearing this bracelet promotes excellent biofield support. Wear one and feel the difference!

Elite Craftsmanship: Made from top-quality, solid 316L stainless steel, the highest standard in jewelry, ensuring durability and an elegant feel.

Hypoallergenic and Comfortable: Designed for all-day wear, this bracelet is hypoallergenic and has a pleasing weight that adds to its premium quality.

Mobius Strip Links: Each link functions like a mobius strip, seamlessly feeding bioenergy forward, creating a dynamic, flowing energy throughout the bracelet.

Biofield Support: Wearing this geometric masterpiece enhances your biofield, promoting overall energetic balance and well-being.

Customizable Options: Available in two lengths and two widths, allowing you to choose the perfect fit for your style and comfort.



Sizes Available:

SKU: 3202 - 7.5 Inch, 6mm

SKU: 3203 - 7.5 Inch, 9mm

SKU: 3200 - 8.3 Inch, 6mm

SKU: 3204 - 8.3 Inch, 9mm

SKU: 3205 - 8.3 Inch, 13mm

Geo-Necklace

A Geometric Masterpiece Necklace



Mobius Strip Links: Each link functions as a mobius strip, continuously feeding bioenergy forward, creating a dynamic and harmonious energy flow throughout the necklace.

Biofield Enhancement: Wearing this geometric masterpiece supports and enhances your biofield, promoting overall energetic balance and well-being.

Customizable Fit: Available in two lengths and two widths, allowing you to select the perfect style and fit for your personal preference.

Sizes Available:

SKU: 3207 - 20 Inch, 4mm

A geometric masterpiece necklace. (Options: 2 lengths & 2 widths to choose from) This elite necklace is made from top quality, solid 316L stainless steel (the best stainless in the jewelry market). It is hypoallergenic and has some nice weight to it. Interestingly, each link in this necklace acts like a little mobius strip that feeds bioenergy forward into the link next to it – as if its “dancing” forward throughout the entire chain of the necklace. Wearing this necklace promotes excellent biofield support. Wear one and feel the difference!

Elite Craftsmanship: Made from top-quality, solid 316L stainless steel, the finest stainless steel in the jewelry market, offering durability and a luxurious feel.

Hypoallergenic and Comfortable:

Designed for everyday wear, this necklace is hypoallergenic and features a substantial weight for added quality.



Quantum Chain

Genuine 14K Gold Plated Brass Chain



Durable Craftsmanship: While the chain is designed for daily wear, please handle with care and avoid yanking or tugging which could damage the clasp.

Natural Beauty: Enjoy the chain's inherent resonance and aesthetic appeal, adding a touch of the quantum to any outfit.

Bioenergetic Support: The chain is crafted to maintain energetic harmony, complementing both your style and well-being.

Sizes Available:

SKU: 5167 - 24 Inch

SKU: 5169 - 24 Inch (bigger loop)

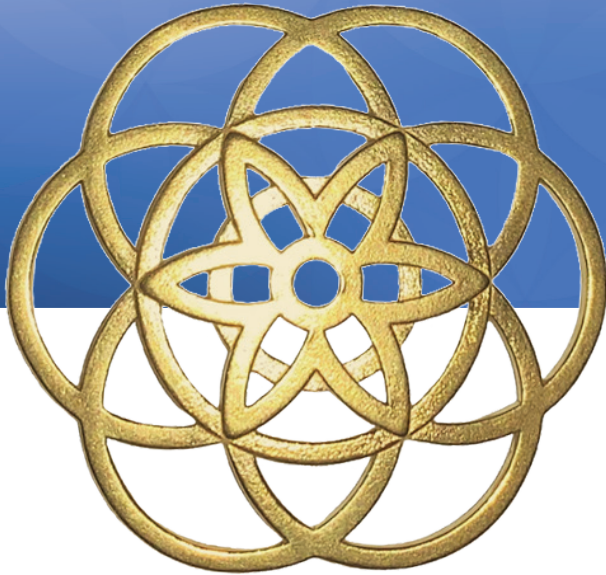
SKU: 5168 - 28 Inch

Please enjoy the natural beauty and inherent resonance of this bioenergetically balanced, 14K gold plated chain. This chain may be used with any type of pendant. Please note: Please avoid yanking or tugging on the chain which may damage the clasp.

Elegant 14K Gold Plating: This chain is beautifully plated in 14K gold, offering an attractive look and feel, while maintaining bioenergetic balance.

Versatile Design: Suitable for use with any type of pendant, making it a perfect addition to your jewelry collection.





Quantum Pendant

Genuine 14K Gold Plated Brass Pendant

Please enjoy the beauty and esthetics of this beautiful 14K gold plated pendant. We were inspired to create this pendant to deliver full quantum coherence by creating a true sacred geometry pattern with the use of precious 14K gold and brass metals.

The Quantum Pendant, based on Vastu geometry like the Flower of Life, is a wearable tool that strengthens and augments the biofield. Its layered design and use of scalar wave technology help protect the body from EMFs, while enhancing bioenergetic coherence.

Exquisite 14K Gold Plating: This pendant is plated in 14K gold, offering a stunning and attractive aesthetic that enhances any outfit.

Sacred Geometry Design: Crafted with a true sacred geometry pattern, this pendant is designed to deliver full quantum coherence and energetic harmony.

Inspired Craftsmanship: Created with the inspiration to merge beauty with purpose, using a balanced combination of precious 14K gold and brass metals.

Elegant and Meaningful: Beyond its beauty, this pendant is a symbol of balance and coherence, making it a perfect piece for those who value both style and deeper meaning.

Versatile Elegance: Designed to be worn with any chain, this pendant adds a touch of elegance to your jewelry collection while supporting your energetic well-being.

Sizes Available:

SKU: 5159 - Regular

SKU: 5165 - Large





Geo-Dot

High Polarity, Geometric Grounding Disc

This high polarity, geometric grounding disc features a patented, genuine “flower of life” design within a QRA-tested geometric outline that has been laser-printed onto a proprietary compressed metallic disc.

Uses: Place a Geo-Dot directly over the battery compartment on any battery-operated device, such as a wall clock, stand-up clock (with a battery), remote control, car keys (with battery), flashlight, computer mouse (battery-operated) and more. This disc is also used to enhance the dominant frequency of the front door as well as used on interior door frames, mirrors, and toilets.

Patented Flower of Life Design: Features the authentic “flower of life” pattern within a QRA-tested geometric outline, laser-printed on a compressed metallic disc.

High Polarity Grounding: Provides superior grounding properties, enhancing the bioenergetic balance of any battery-operated device.

Versatile Application: Ideal for placement over battery compartments in clocks, remote controls, car keys, flashlights, and more.

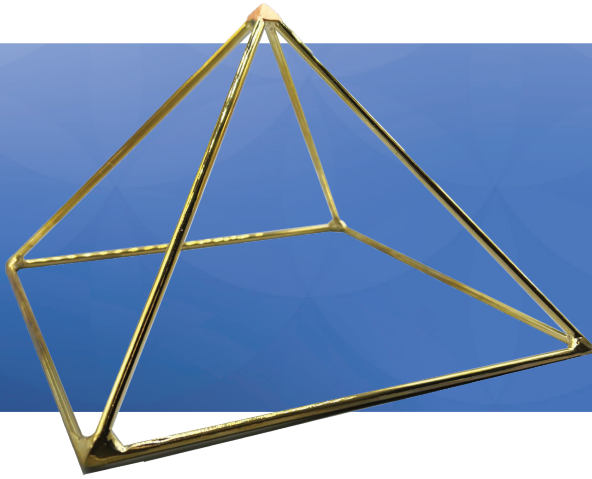
Home Energy Enhancement: Can be used to elevate the dominant frequency of your front door, as well as interior door frames, mirrors, and toilets.

Easy to Use: Simply place the Geo-Dot on the desired device or area for immediate grounding and bioenergetic support.



Sizes Available:

SKU: 3209 - Pack of 6



Geo-Gold Pyramid

24K Gold-plated, Open Frame Pyramid

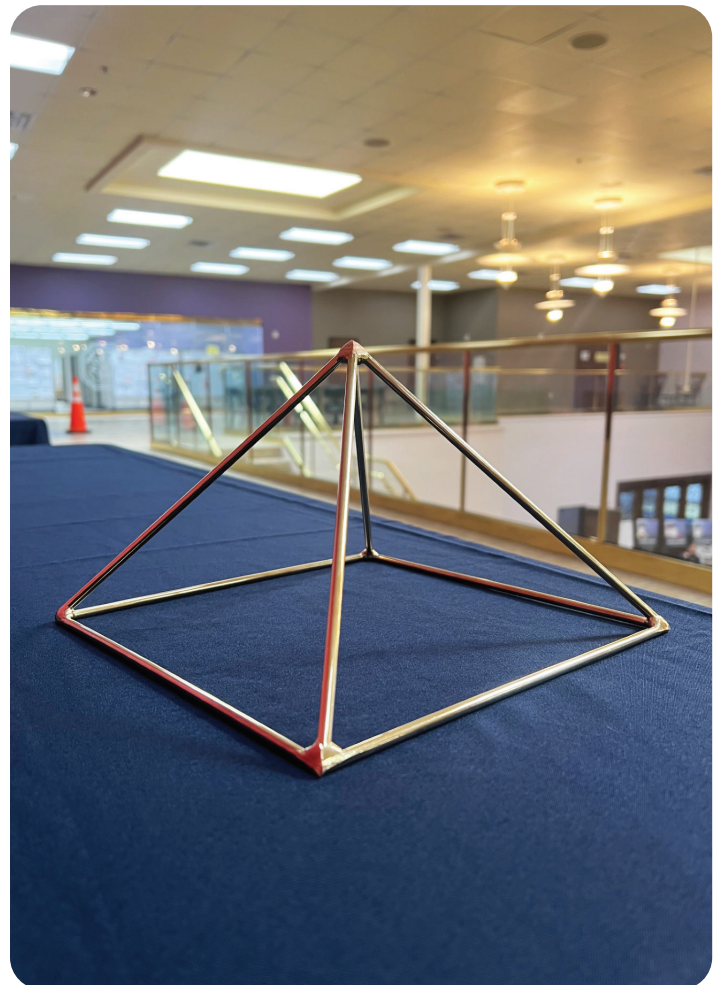
The Geo-Gold Pyramid is one of our finest achievements in Vastu technology. This 4-polarity, 100% metal, open-frame pyramid has been structured with the exact dimensions of the time-honored Pyramid of Giza (52 degree slope angle). It has been gold-plated with 24k gold over a proprietary metal, then LiquiTech (a high-tech copper polymer) has been applied to the pyramid's apex. This creates a dynamic dielectric interaction of highly polarized charges to deliver the "Vastu Effect."

The G-G Pyramid may be placed on a table or counter in your home or office for exquisite biofield support. It may also be used as a "stacked pyramid" composed of 2 or 4 pyramids (but not 3). Simply place one pyramid over the other. As a single or stack, this pyramid provides superior biofield support in any home or other building. Foods may be placed within its open frame (for a few seconds) to be bio-energized before consuming. Many other types of objects may be placed in the pyramid, such as a CZ bracelet, to bio-energize it before wearing.

Note: We also highly recommend doing the Circuit Box Reset and the use of Geo-Ground to bioenergetically ground your home. (Please see directions.)

Sizes Available:

SKU: 3222 - 9.25" (base side length), 5.75" (apex height)





Geo-Ground

5-in-one Master Grounding Formula

This master, 5-in-one soil nutrient/grounding formula features 5 important soil upgrades for excellent bioenergetic grounding around your home: aged basalt, humate as humic acid (from leonardite), ocean kelp, mycorrhizae (4 key types, including Rhizophagus intraradices) and beneficial soil bacteria (5 types including Bacillus subtilis).

Uses: Use Geo-Ground to bioenergetically ground the grass/soil areas and concrete areas around your home (and workplace) to achieve superior Vastu effects. This nutrient blend supplies the vast nutritional benefits of both the ocean and land to benefit the grass areas, soil and plants around your home. It creates soil that is more mineralized, more porous, soft and well drained with better retention of nutrients and water. This acts to enhance the coherence benefit the grass areas, soil and plants around your home. It creates soil that is more mineralized, more porous, soft and well drained with better retention of nutrients and water. This acts to enhance the coherence of the ground areas so that highly beneficial environmental “chi” may flow richly along the ground areas and saturate your home with high-energy, sparkling energetics.

Key Areas for Application: Apply Geo-Ground at the base of the exterior walls of your home and along the edges of concrete areas near your home, including the edges of sidewalks, driveways, outdoor patio, front porch, swimming pool or other concrete areas.

Also, apply it at the base of trees and bushes once per year. Great for house plants. Excellent to apply to all grass areas, esp. the grass in the front yard area directly in front of the front door (called “the mouth of chi”).

Application Rates: Mix 1 rounded tbsp. of Geo-Ground per quart of water. Use 1 blended quart per 2 feet of exterior wall or sidewalk/driveway/concrete length. Use 2 quarts per tree; 1 quart per bush (apply once/year).

5-in-One Soil Enhancement: Combines aged basalt, humic acid, ocean kelp, mycorrhizae, and beneficial soil bacteria for superior bioenergetic grounding.

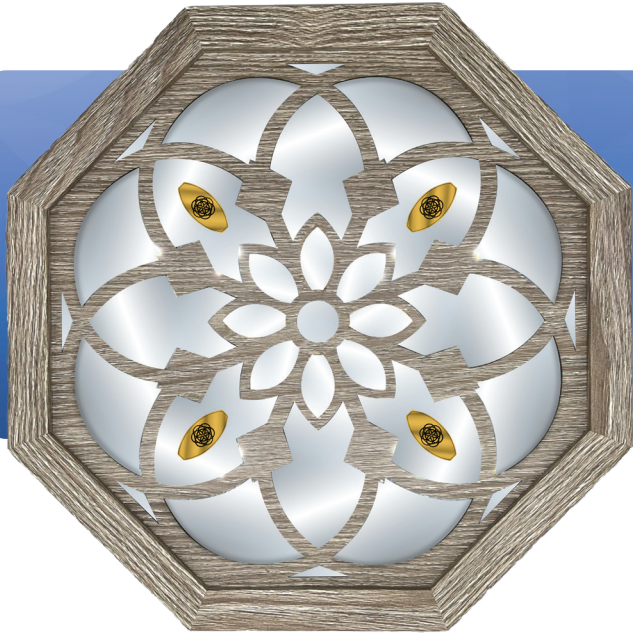
Boosts Soil Health: Enhances soil mineralization, porosity, and nutrient retention, promoting healthier grass, plants, and overall ground coherence.

Vastu-Optimized: Designed to improve environmental chi flow around your home, saturating it with high-energy, vibrant energetics.

Versatile Application: Ideal for use along exterior walls, concrete edges, trees, bushes, and grass areas, especially near the front door for enhanced chi.

Easy to Use: Mix 1 tbsp. per quart of water, with specific application rates for walls, trees, bushes, and grass areas. Apply once per year.

Sizes Available: SKU: 3212 - 1 lb bag



Geo-Mirror

Octagonal Grounding Mirror

This heavy wood-framed octagonal mirror exponentially expands its bioenergetic properties far beyond that of the typical 8-sided Bagua mirror (used in ancient times). The enhanced properties of this mirror are also due to its high clarity mirror glass, unique geometric wood pattern and elevated energy from 4 Geo-Sync discs strategically placed around its periphery. Uses: This mirror is used to balance a hallway that is too long (> 6 ft), too narrow (< 6 ft), an L-shaped rooms or the cut corners of a house. It may be placed on N and E walls only.

Octagonal Design: This mirror features a heavy wood frame in a unique octagonal shape, enhancing its bioenergetic properties far beyond traditional Bagua mirrors.

High Clarity Glass: Crafted with high clarity mirror glass, ensuring sharp reflections and amplifying the mirror's energy-boosting effects.

Geo-Sync Discs: Equipped with 4 strategically placed Geo-Sync discs around its periphery, significantly elevating the mirror's bioenergetic influence.

Hallway and Room Balancing: Ideal for balancing long or narrow hallways, L-shaped rooms, and cut corners of a house, promoting harmonious energy flow.

Directional Placement: Specifically designed for placement on North and East walls to maximize its grounding and balancing effects.

Sizes Available:

SKU: 3201 - 12" x 12"





QCI Vial

Used for Advanced Biofield
Coherence Techniques

function of the body. It is intended solely to support the testing environment in which energetic assessments are performed.

SKU: 3412

The Quantum Coherence Integrator™ (QCI Vial) is a specialized biofield accessory designed to support practitioners in establishing a clear and consistent response in QRA® and other energetic-assessment methods.

Uses: The vial contains a blend of high-density, negatively charged earth elements with natural piezoelectric properties - physical characteristics appreciated within various assessment traditions. Many practitioners use the QCI Vial prior to testing, especially after exposure to everyday electronic or environmental frequencies that may introduce testing “noise” within the biofield itself.

Application at GV-20 is commonly included as part of practitioner or client preparation to support steady, focused testing conditions. Advanced users may also incorporate the vial into broader energetic-assessment routines.

The Quantum Coherence Integrator™ does not diagnose, treat, cure, or prevent any disease and does not affect the structure or





Geo-Sync

Master Grounding Disc

This high polarity, geometric grounding disc features a patented, genuine “flower of life” design placed within a Vastu-tested, truncated boat shape outline that has been laser-printed onto a proprietary compressed metallic disc.

Uses: For a Circuit Box: Place one 2-layer stack on the back panel of the circuit box. Peel off the backing sheet, then place the Geo-Sync stack (vertically oriented), sticky side down, about 2 inches from the top of the back panel, in the center of the panel. For a Smart-Meter: Place one 2-layer stack underneath the Smart-Meter box, centered in the middle.

High Polarity Grounding: This geometric disc features a patented “flower of life” design within a Vastu-tested, truncated boat shape, laser-printed on a compressed metallic disc.

Enhanced Energy Flow: The disc is engineered to promote optimal bioenergetic grounding and balance, particularly in areas with electrical devices.

Circuit Box Application: Place a 2-layer stack on the back panel of your circuit box to enhance grounding; position it vertically, 2 inches from the top and centered.

Smart-Meter Balancing: Place a 2-layer stack underneath the Smart-Meter box, centered, to mitigate disruptive energy and enhance bioenergetic stability.

Easy Installation: Simply peel off the backing sheet and apply the Geo-Sync stack as instructed for effective grounding and energy harmonization.

Sizes Available:

SKU: 3208 - Pack of 2





LiquiTech

Liquid Grounding Polymer

This copper-based liquid metallic polymer (water-based, non-toxic) is the brilliant solution for remarkable indoor bioenergetic grounding of electrical cords. Shake well before use. Allow 24 hours for it to fully cure on a surface. Easy to apply. Avoid skin contact. To remove LiquiTech from hands if needed, scrub with soap and water.

Uses: For bioenergetic grounding, apply a small dot of LiquiTech on common electrically-based items, especially plugs (place a small drop on a cord near the plug). For example, place a small dot of liquid on the cord (about 1 inch away from the plug) that goes to any electrical unit, such as a wifi unit, computer, cable box, blender, and other common electrical items found in a household.

Shake well before use. Cures in 24 hours. Clean surfaces then dry before using LiquiTech.

- Liquid metallic polymer for bioenergetic grounding
- Superior metallic acrylic paint for indoor/outdoor use
- Water-based, non-toxic paint
- May be used on most paintable surfaces, easy to apply

Sizes Available:

SKU: 5174 - 0.5 FL OZ (10 mL)





Matrix Pyramid

Geometric, High Polarity, Metal Pyramid

(Dimensions: 7.9" x 6.7") This black metallic geometric pyramid has been crafted to form a complex arrangement of geometric shapes that all coalesce at the capstone of the pyramid. This unique geometry confers unusual properties to the pyramid, such that it is capable of harmonizing the high frequency "sha chi" (undesirable energy) generated within compressed, small spaces.

Uses: Place this pyramid in a small room (any room < 9 ft width or length), such as a small office, a waiting room, treatment room, a nurse's station, bathroom, closet or a "tiny home." It may also be placed in any size room for enhanced bioenergetic support. It may even be used as a creative centerpiece for a table. Excellent to take with you on trips to bio-harmonize your hotel room.

Harmonizes High-Frequency Energy: Effectively neutralizes undesirable "sha chi" energy in small, compressed spaces, promoting a balanced environment.

Versatile Placement: Ideal for small rooms like offices, bathrooms, or tiny homes, but also enhances bioenergetics in larger spaces.

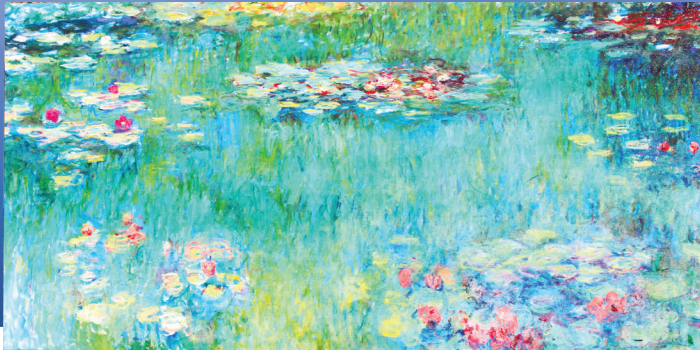
Portable and Practical: Perfect for travel, ensuring bio-harmonized energy in hotel rooms or other temporary spaces.

Elegant Design: Doubles as a creative centerpiece, adding a touch of sophistication to any table or decor.

Sizes Available:

SKU: 3211 - 7.9" x 6.7"





Monet Painting

Exquisite, Museum Quality Art

Exquisite, Museum Quality Art. ALL 5 of the ancient Classical 5 Elements (5 colors) in one painting. (Dimensions: 20" x 40"). This high-resolution canvas art piece ensures exceptional detail and color accuracy that captures the essence of Monet's original painting. It is printed on thick, artist-quality canvas that has been professionally stretched over a sturdy, interior wooden frame (which has been kiln dried). The canvas has been hand-wrapped around the sides that results in an elegant 3-D effect. It has a back hook for easy hanging. Waterproof, UV-resistant, fade-resistant.

Uses: In the ancient art of Vastu, the walls of your home act as strong conveyors of quantum resonance for your entire home. Therefore, it really matters what artwork you place on your walls. This exquisite 5-Element Monet art piece is an ideal visual masterpiece for generating superior bioenergetic resonance in your home. It may be placed on the wall in any room.

Exquisite Museum Quality: High-resolution canvas art capturing the essence of Monet's original, ensuring exceptional detail and color accuracy.

All 5 Classical Elements: Incorporates all five ancient Classical Elements (five colors) into one harmonious and balanced visual masterpiece.

Premium Craftsmanship: Printed on thick, artist-quality canvas, hand-wrapped for a 3D effect, and stretched over a kiln-dried wooden frame.

Durability Guaranteed: Waterproof, UV-resistant, and fade-resistant, ensuring long-lasting beauty and vibrancy.

Vastu-Enhanced Resonance: Ideal for enhancing the quantum resonance of your home, making it a perfect addition to any room.

Sizes Available:

SKU: 3213 - 20" x 40"





PG Mini Boulders

Pink Granite Grounding Stones

These large size, quantum state, pink granite stone “mini-boulders” are mined from a top choice granite mountain are in Texas, USA. The emit a natural piezoelectrical effect when placed over natural earth areas (such as soil or grass) which we believe may help to enhance the environmental bioenergetics of an area.

These stones may be used as a beautiful, “natural look’ granite border when placed along walkways, around a firepit, around a swimming pool, around a garden plot or along a fence area.

When buried beneath the ground along the edges of a garden, the stones help retain moisture in the soil. For enhanced environmental effects, you may place 2 to 8 stones near the base of the outside wall of your home or office over natural ground. We believe this helps to create a superior environmental effect.

Natural Piezoelectrical Effect: Emits a natural piezoelectric charge when placed on soil or grass, potentially enhancing the bioenergetics of the surrounding environment.

Versatile Decorative Use: Ideal for creating beautiful, natural-looking borders around walkways, firepits, pools, gardens, or fences.

Moisture Retention: When buried along garden edges, these stones help retain soil moisture, promoting healthier plant growth.

Superior Environmental Impact: Placing 2 to 8 stones near the base of your home or office may enhance the environmental energy of the area.

Mined in Texas: Sourced from top-quality granite mountains in Texas, USA, ensuring authenticity and durability.

Sizes Available:

SKU: 5162 - 2-4 per bag

SKU: 5163 - 5-8 per bag

Premier Granite Gravel

Chunky Texas Pink Granite Gravel for Superior Bioenergetic Grounding

High resonance, piezoelectric pink granite gravel from world-renowned Texas quarries. Texas pink granite is known to be on par with the high-quality granite used in the pyramids of Giza. This chunky gravel (composed of various stone sizes) is excellent for use outside for bioenergetic grounding.

Recommended Uses: Apply this product to bioenergetically upgrade the concrete areas around your home or office to achieve superior Vastu bioenergetics.

Because concrete areas are known to be highly depolarizing due to their imbalanced polarity charges, this product helps to balance the polarity so beneficial environmental “chi” may flow richly into your home to deliver high-energy, sparkling energetics.

- Apply at the outside corners of your house (1 foot length on each side of a corner) to confer high-energy field strength inside.
- Apply outside at the base of the walls of high-use rooms of your home, such as your bedroom or family room
- Apply along the base of the front porch, sidewalks, patio, driveway, swimming pool
- Apply around the base of a tree or bush that is located too close to your house (this applies to any tree or bush over 2 feet tall within 20 feet of the exterior walls)
- Excellent to apply to planting areas (on the ground) and in plant containers

- **Please note:** It is highly recommended to use Geo-Ground (a master soil nutrient formula) as a liquid on the ground before placing Premier Granite Gravel.

Application Rates: For each corner of your home, use ½ bag. For one side of a corner, place ¼ bag along the base of the outside wall, about 1 foot in length from the tip of the corner. Repeat on the other side of the corner.

For other concrete areas, place approximately ¼ bag per 1 foot length of concrete. Place the gravel on the ground, along the sides of the concrete. Ideally, apply Geo-Ground on the ground area first.



Sizes Available:

SKU: 3221 - 1 lb bag



Premier Large Solid Brass Bell

Staircase Grounding Bell

Staircase Grounding: This classical, large, heavy bell is made from solid brass and has a wooden handle [Dimensions: 11" (H) x 5" (D)]. It is rust-resistant and has a beautiful antique design similar to the classic Liberty Bell in Pennsylvania. It is scientifically proven that hearing the sound of a high quality bell is able to synchronize the left and right sides of the brain. This can help boost alertness, make the brain more receptive and upgrade brain harmony.

Uses: For a single staircase (any type), place the bell at the bottom of the staircase on the last step (one step up from the floor), on one side. This bell bioenergetically grounds the fast-moving "sha chi" (undesirable energy) that disturbingly shoots downward too fast from a single staircase which acts to depolarize the nearby living space on the ground floor as well as pulling away nourishing "chi" from the upper floor. Unfortunately, this is typical of single staircases.

For biofield brain support, enjoy ringing the bell lightly a few times each day to create left-right brain harmonization. Then replace the bell back on the staircase step.

Solid Brass Construction: Crafted from solid brass with a wooden handle, this heavy, rust-resistant bell features a beautiful antique design reminiscent of the Liberty Bell.

Brain Harmony: Ringing this high-quality bell helps synchronize the left and right sides of the brain, boosting alertness and enhancing brain harmony.

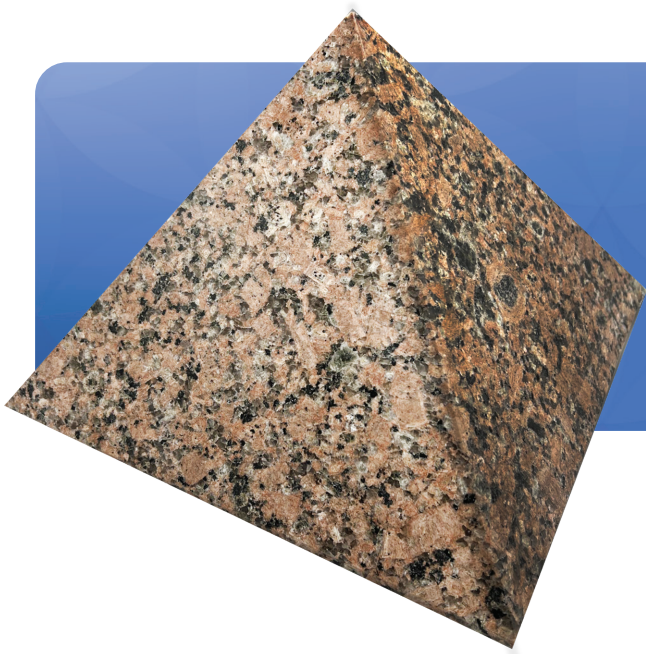
Staircase Grounding: Placing the bell on the last step of a single staircase grounds fast-moving sha chi, preventing energy disturbances and supporting the flow of nourishing chi in your home.

Daily Brain Support: Lightly ring the bell a few times daily to promote left-right brain harmonization and then replace it on the staircase step.

Elegant Home Addition: Adds a touch of classical beauty to your home while providing significant bioenergetic benefits.

Sizes Available:

SKU: 3215 - 11" (H) x 5" (D)



PureGran Granite Pyramid

High Polarity, Rose Granite Grounding
Pyramid

This rare, one-of-a-kind, heavy weight, rose granite pyramid is composed of myriads of naturally occurring embedded crystalline latticework. It has been sourced from a quarry located in a solid granite dome mountain that has naturally occurring highly resonant, double ley line energetics. This granite pyramid showcases crystalline piezoelectric bioenergetics at its best.

Uses: Place this pyramid on a ground area near your home so that it is located directly on a central line extended out from the center of your home (and at least 20 ft or more from your home). The piezoelectric effects of the crystalline latticework emit high frequency inerton particles that act to reinforce the full central line of your house to re-invigorate the bioenergetic properties of your entire home.

Unique Rose Granite Pyramid: Crafted from rare, heavy rose granite with naturally embedded crystalline latticework, showcasing exceptional piezoelectric bioenergetics.

Sourced from a Resonant Quarry: Mined from a granite dome mountain with naturally occurring double ley line energetics, enhancing its natural resonance.

High Polarity Grounding: Emits high-frequency inerton particles, reinforcing the bioenergetic central line of your home for enhanced energy flow.

Strategic Placement: Designed to be placed on a ground area at least 20 ft from your home, aligned with the central line extended from your home's center.

Reinvigorates Home Energy: Acts to re-energize and harmonize the bioenergetic properties of your entire home through its powerful piezoelectric effects.

SKU: 3220





Q-Disc 6.0

“True-to-Vastu” Design with QRA-tested Geometric Outline

For all cell phones. This new 6th generation Q-Disc works well for all cell phones. This sleek, thin disc features a patented, genuine “flower of life” design (unlike non-authentic, altered “flower of life” designs). This “true-to-Vastu” design is anchored within a QRA-tested geometric outline and then has been laser-printed onto a proprietary compressed metallic disc.

Uses: For cell phones (of any type), affix the disc to your cell phone by peeling off the backing sheet and then place the sticky side of the disc down on the back of your phone.

For an iPad (which has a large, extended flat battery), place 2 discs on the back side of the iPad, approximately in the center, spaced apart from each other by about 4 inches.

6th Generation Technology: This sleek, thin Q-Disc features a patented, genuine “flower of life” design, ensuring true-to-Vastu alignment for optimal bioenergetic support.

Universal Compatibility: Designed to work effectively with all cell phones, providing a seamless fit and enhanced biofield protection.

Proprietary Design: Laser-printed onto a compressed metallic disc within a QRA-tested geometric outline, ensuring authenticity and superior performance.

Easy Application: Simply peel off the backing sheet and affix the disc to the back of your cell phone for immediate benefits.

iPad Use: For iPads with large, flat batteries, place two discs on the back, spaced 4 inches apart in the center, for enhanced energy balancing.

SKU: 3248





Check Our Website for the Latest Content Updates:

3500 Wadley Place, Building B, Austin, Texas, 78728
800.325.7734 • Fax 512.218.2517 • www.prlabs.com

